

GROUND FLOOR PLAN
SCALE 1:100

NOTES

INTERNAL WALLS -
SINCE SOME INTERNAL WALLS ARE FACE BRICK UP TO DADO LEVEL, ALL WATER, ELECTRICAL AND GAS INSTALLATIONS TO BE DISCUSSED AND AGREED ON SITE PRIOR TO ERECTION OF WALLS.

WATER, ELECTRICAL AND GAS INSTALLATIONS TO BE BUILT INTO FACE BRICK WALLS WHERE NEEDED AS NO CHASING CAN BE DONE AFTER CONSTRUCTION THEREOF

NO SURFACE MOUNTED SERVICES ARE ALLOWED, APPROPRIATE "S/S 1216 COMPOSITE PIPE" TO BE USED WHEN PIPING IS INSTALLED WITHIN WALLS AND FLOOR SLABS. INSTALLATION TO BE DONE BY CERTIFIED GAS INSTALLER.

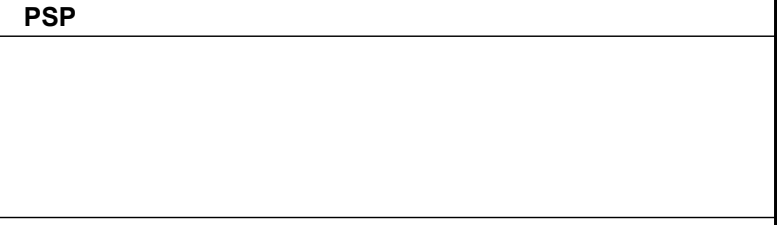
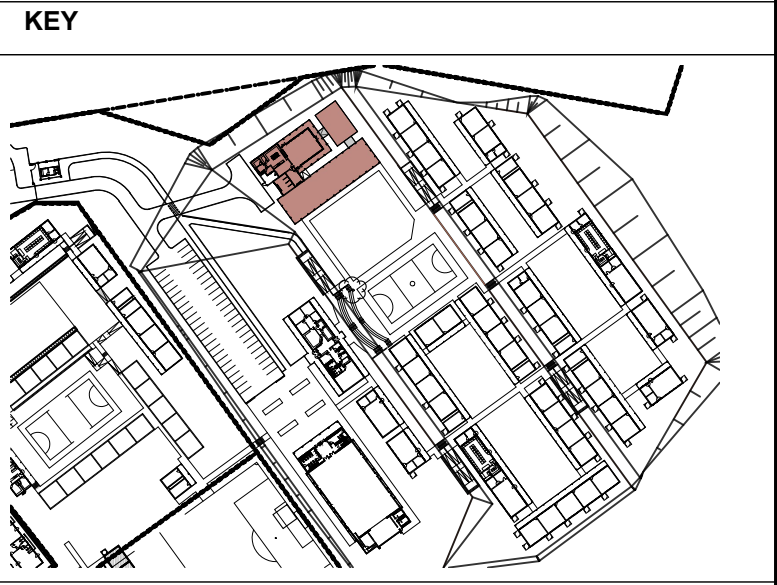
FURNITURE -
FOR LOOSE AND FIXED FURNITURE REFER TO FURNITURE SCHEDULE AND JOINERY DRAWINGS.

STORM WATER
POSITION OF TANKS AND CONCRETE RAINWATER CHANNEL TO SUIT SITE CONDITIONS AS PER SITE LAYOUTS TO ACCOMMODATE STORMWATER AND OVERFLOW, TO CIVIL ENG'S DESIGN AND DETAIL

TRUSS
TRUSS MANUFACTURE TO SUBMIT A WORKSHOP DRAWING FOR APPROVAL

NO.	DATE	REVISION	DRAWN
A	2017-02-02	ISSUED FOR MEASURE	SG
B	2017-02-16	ISSUED FOR INFORMATION	SG
C	2017-07-27	1. TOP OF CONCRETE LEVEL CHANGED 2. GAS CAGE INDICATED 3. ISSUED FOR MEASURE	SG
D	2017-08-10	1. TOP OF CONCRETE LEVEL REVISED. 2. ISSUED FOR MEASURE	SG
E	2017-12-07	1. CHANGED WINDOWS TO VENT PANEL (DRY STORE, DAY STORE & RECYCLE ROOM) 2. INCLUDED FLOOR DRAIN ON RECYCLE ROOM & REMOVED ROLLER SHUTTER(RS) 3. INCREASED SIZE OF GAZEREO AND INCLUDED CASUAL SEATING AREA TO ACCOMMODATE 600+ STUDENTS 4. TOP OF CONCRETE LEVEL REVISED.	OM
F	2018-03-19	1. TOP OF CONCRETE LEVEL REVISED. 2. VINYL TILES CHANGED TO VINYL SHEETING. 3. ISSUED FOR MEASURE	SG
G	2018-03-29	1. VEG STORE MOVED TO NEW POSITION. 2. DELIVERY AREA ADDED TO PLAN. 3. ISSUED FOR INFORMATION.	SG
H	2021-03-01	ISSUED FOR INFORMATION 1. ROOF CHANGED TO GABLE END 2. CHANGED 300 x 330mm VERANDAH COLUMNS TO 100 x 100mm STEEL POSTS 3. ADDED RAINWATER TANKS	DW RJS
J	2022-07-08	ISSUED FOR MEASURE (EFMS)	DW
AA	2022-04-13	1. DWG NO. CHANGED FROM 1617 TO 2204	DW
AA	2022-08-18	ISSUED FOR MEASURE - SEE REV J L. LEVELS INDICATED USING 100.000 AS T.O.C.	DW

ISSUED FOR
APPROVAL



ARCHITECT

- mpande -
consultants
architects & project managers

13 Cumberland Street, Mthatha
P.O. Box 7105
Mthatha, 5100
Tel: 041-533-5382 Fax: 041-533-5311

18 Lower Goldenhays Drive,
Emmanuel, Johannesburg
P.O. Box 11924
Auckland Park, 2006
Tel: 011-488-2623 Fax: 011-488-1935
Email: mpande@architect.co.za

ARCHITECTURAL PROFESSIONAL SACAP NUMBERS:
H.L. MANTEL SACAP 3045

IMPLEMENTED BY

**INDEPENDENT
DEVELOPMENT
TRUST**

SIGNATURE	DATE	SHEET NO.
DESIGNED -	-	SCALE 1:100
DRAWN OM	08/10/2017	STATUS LISTING I = INFORMATION FM = FOR MEASURE T = TENDER C = CONSTRUCTION AB = AS BUILT
VERIFIED -	-	
VALIDATED -	-	

CLIENT	IMPLEMENTING AGENT

PROJECT
**DOE PORTFOLIO PROGRAMME
ESTABLISHMENT OF NEW SCHOOLS
HILLBROW - SENIOR SECONDARY SCHOOL**
PROVINCE: EASTERN CAPE PROVINCE

DRAWING TITLE
**NUTRITION CENTRE (BLOCK S-C)
FLOOR PLAN**

DRAWING DESCRIPTION
DNC-D

EMIS NUMBER	DISCIPLINE	DRAWING NUMBER	STATUS	REVISION
200500293	ARCH	2204 w03 01/200	FA	AA